



# Using Web Jetadmin to Manage Configuration Settings for the HP Print Server Appliance

(Web Jetadmin version 7.2 and above; PSA Firmware version 2.4.x and above)

## Overview

The HP Print Server Appliance (PSA) Management plug-in for Web Jetadmin enables administrators to perform numerous tasks for one or multiple PSA in a batch environment. This whitepaper discusses how to manage configuration settings for the PSA using Web Jetadmin. Other features in the Management plug-in are:

Feature	Related Whitepaper ( <a href="http://www.hp.com/go/psa_whitepapers">www.hp.com/go/psa_whitepapers</a> )
Install the PSA's Management plug-in	Overview of Plug-ins ( <a href="http://www.hp.com/go/wja_whitepapers">www.hp.com/go/wja_whitepapers</a> )
Update the firmware for one or multiple PSAs	Using Web Jetadmin to Update the HP Print Server Appliance
Back up and restore the PSA	Using Web Jetadmin to Back Up and Restore the HP Print Server Appliance
Manage printer drivers on the PSA	Using Web Jetadmin to Manage Printer Drivers on the HP Print Server Appliance

## Description of the HP Print Server Appliance

The PSA is a network device used to manage and monitor printing (Figure 1). It has been designed to provide a quick and easy way to add print capacity and off-load print spooling and services from the general-purpose servers. The latest firmware version is 2.4.x, which includes support for Web Jetadmin plug-ins that provide centralized management of the printing environment and infrastructure.



Figure 1 – HP Print Server Appliance 4250

## Installing the PSA's Management Plug-in

The PSA's Management Plug-in is available from hp.com, using Web Jetadmin's automated download facility. Before installing the plug-in for Web Jetadmin 7.2, the HP Service Patch 2 must be installed. This patch can be installed using **Product Update** in HP Web Jetadmin for Microsoft Windows NT/2000/XP. If HP Web Jetadmin is configured for internet access, the patch will already appear under the list of available updates in **Product Update**. Otherwise, the package can be manually downloaded from [www.hp.com/go/wja\\_components](http://www.hp.com/go/wja_components) and uploaded into **Product Update**.

For more information about the plug-ins, see the Web Jetadmin whitepaper **Overview of Plug-ins** ([www.hp.com/go/wja\\_whitepapers](http://www.hp.com/go/wja_whitepapers)).

## Accessing the PSA's Management Plug-in from Web Jetadmin

After the PSA's Management plug-in is installed, there are several ways to access the features (Figure 2).

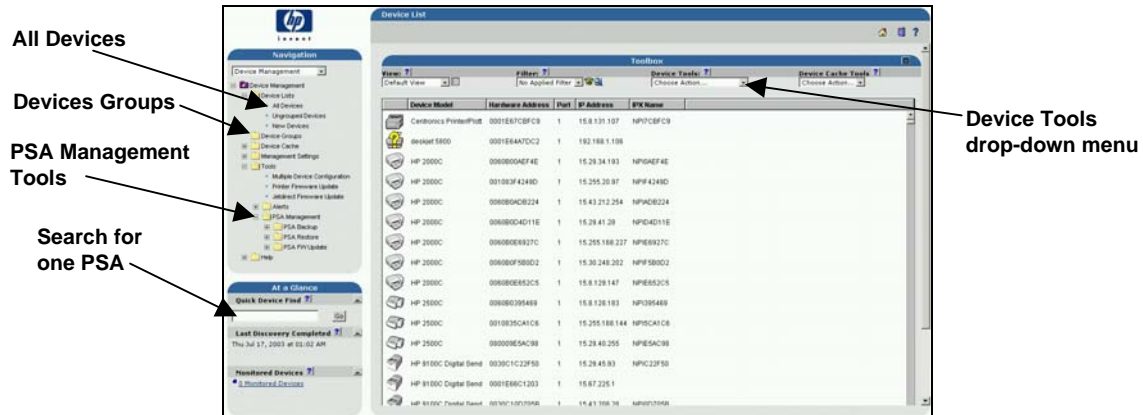


Figure 2 – PSA Management Tools Option in Web Jetadmin

- To manage multiple PSAs, use one of these methods:
  - Under **Navigation** on the left, select **Device List**→**All Devices**.
  - Highlight the desired PSAs.
  - From the **Device Tools** drop-down menu at the top of the page, select **Configure**.or
  - Under **Navigation** on the left, select **Device Management**→**Device Groups**.
  - Select the desired PSAs' group and highlight the desired PSAs.
  - From the **Device Tools** drop-down menu at the top of the page, select **Configure**.
- To manage one PSA at a time through **Quick Device Find** (under **At a Glance**):
  - On the left side of the page in **Quick Device Find**, type the PSA's name or IP address. Then click **Go**. The **Device Properties** page for the PSA is displayed.
  - From the drop-down menu at the top of the page, select **Configuration**.

## Configuring Settings for PSAs

The following settings are configurable on a single PSA or on multiple PSAs in a batch environment through Web Jetadmin:

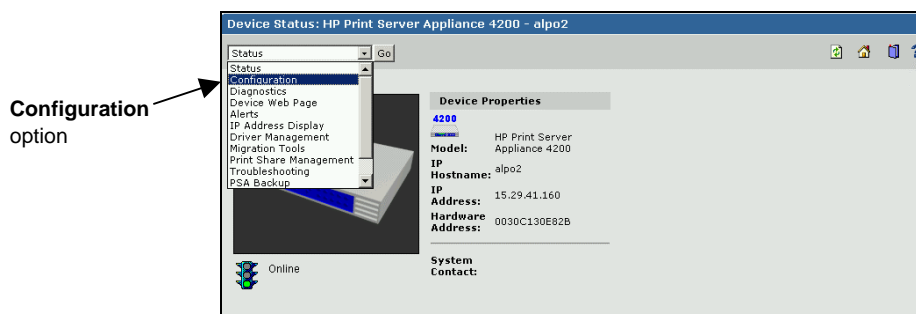
To change...	Look in...	To change...	Look in...
System Time, Date, Time Zone	Device	Specified Hosts	Network
System Contact	Device	Windows NT Domain	Network
Restart/Shutdown	Device	NT Domain Membership Status	Network
PSA Name (single PSAs only)	Network	NT Domain Administrator Name and Password	Network
DNS Domain Name	Network	Windows NT Authentication	Network
DHCP (on/off)	Network	NT Domain Controller Discovery	Network
IP Address	Network	NT Domain Controller	Network
Subnet Mask	Network	Specified NT Domain Controllers	Network
Gateway	Network	Add Local Admin/Password	Network
Primary DNS Address	Network	Delete Local Admin/Password	Security
Secondary DNS Address	Network	Add Domain Admin Account	Security
Primary WINS Addresses	Network	Delete Domain Admin Account	Security
Secondary WINS Address	Network	SSL Encryption Strength	Security
LPD Printing Options	Network	HTTPS Redirection	Security

**Note:** Fields for each of these settings are displayed on separate pages when configuring a single PSA and on one scrollable page when configuring multiple PSAs in a batch environment.

## Managing and Configuring Settings for a Single PSA

To view or change configuration settings on a single PSA, follow these steps:

1. Double-click a PSA or type its IP address in **Quick Device Find** (Figure 2 displayed earlier).
2. Select **Configuration** in the drop-down list at the top of the page (Figure 3).



**Figure 3 – Selecting the Configuration Option for a Single PSA**

3. The **Device Configuration** page for the specified PSA is displayed. Select the desired option in the **Configuration Categories** menu (Figure 4).

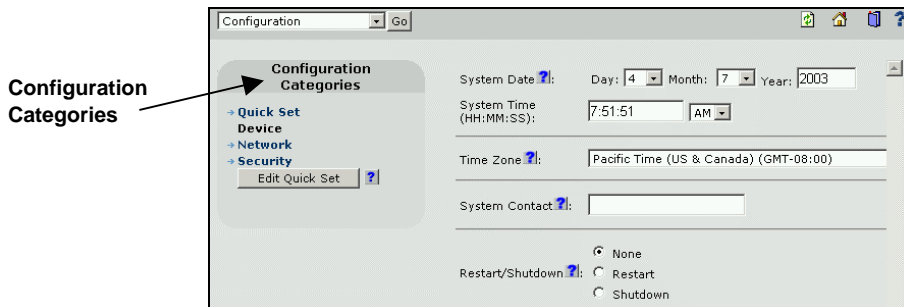


Figure 4 – Configuration Categories Option for a Single PSA

4. Select the setting to change. See the following sections about each **Configuration Category**.

#### Quick Set

**Quick Set** gives you quick access to all common settings you can define. To change the settings, click **Edit Quick Set**.

#### Device

In **Device**, you can change the system contact, system date and time, or time zone (Figure 5). For a configured PSA, the current settings on the PSA are used. For an unconfigured PSA, the time and date from the user's browser is inserted. After the settings have been changed, click **Apply**.

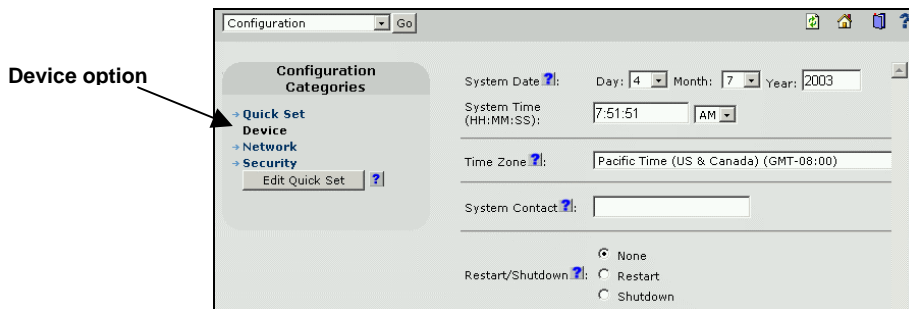


Figure 5 – Device Settings to Change for the PSA

The following can be changed on this page:

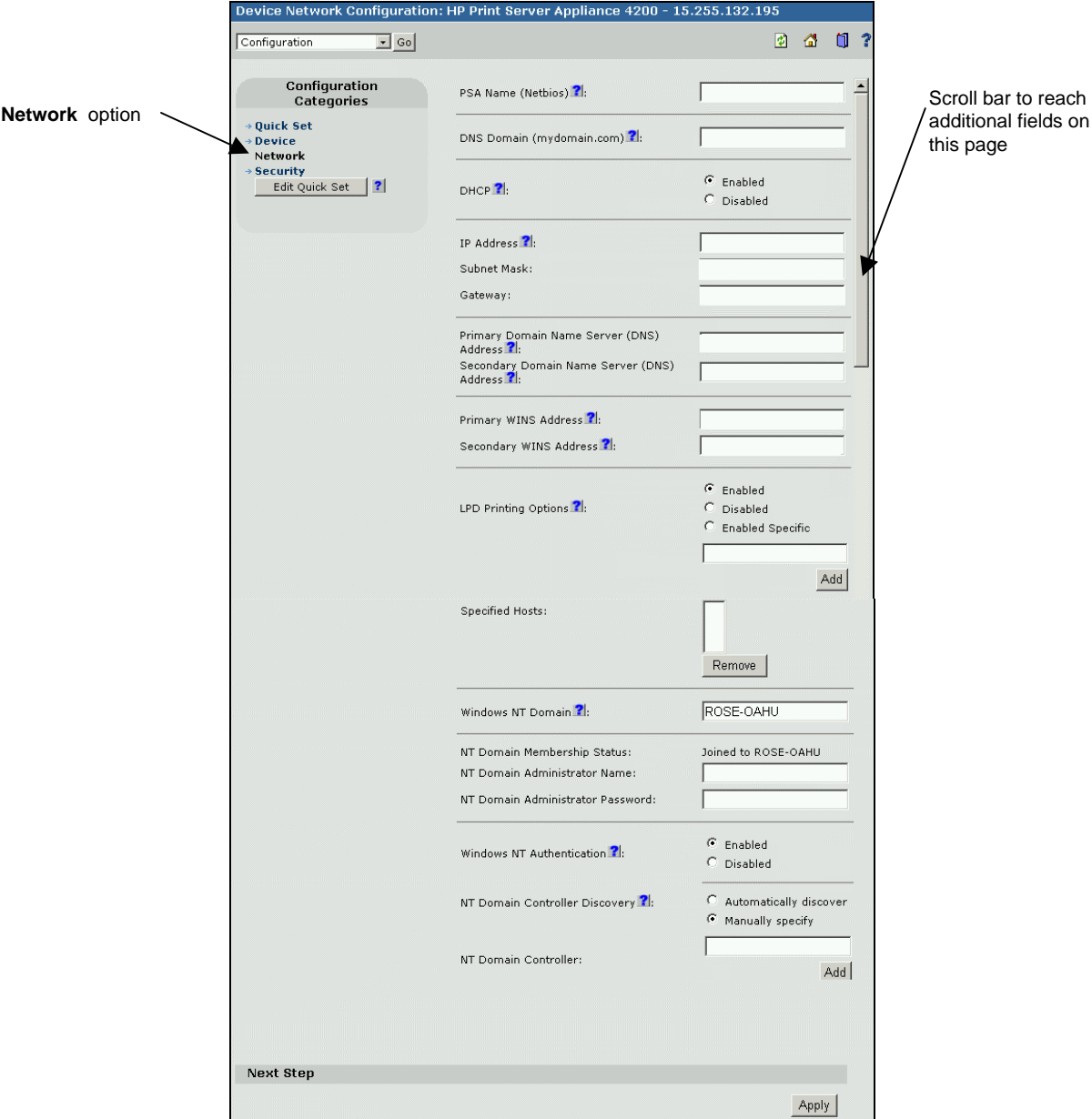
- **System Date:** Select the day and month from the drop-down boxes for the PSA time and date. Then type the 4 digit year.
- **System Time:** Using the drop-down box, set the system time in the format: hh:mm:s. Select AM or PM from the drop-down box.
- **Time Zone:** The time zone must be set for the PSA. You can schedule various functions of the PSA (such as backups, restores, and so forth) based on this time zone. Select the time zone for the system from the drop-down list.
- **System Contact:** Name of the person who owns or is responsible for the device. In Web Jetadmin, this name is displayed on the **Device Status** page for a device and on several

of the device list views. This name is useful when you need to dispatch repair personnel, have questions about a device's settings or usage, or need to report a problem with a device. You can also search for and display a list of all devices that a specific person is responsible for. Type the name of the person to contact in the **System Contact** text box.

- **Restart/Shutdown:** To restart the PSA, select **Restart** and then click **Apply**. To shut down the PSA, select **Shutdown** (you must then manually restart the PSA).

**Network**

Following are the fields found on the **Network** page (Figure 6).



**Figure 6 – Network Settings for the PSA**

- **PSA Name:** Displays the current PSA name (not displayed when configuring multiple PSAs). This name is displayed in the Network Neighborhood on each client PC (the Network Neighborhood is visible from Microsoft Windows Explorer), on the **Overview** page in the PSA's web interface, and on the front panel of the PSA.. If the network uses DNS to identify network resources, this name should match the DNS name. Otherwise, any name will work.

To change the PSA name, type the new name and click **Apply**. The name may contain up to 220 alphanumeric characters. It may also contain hyphens ( - ) and periods ( . ). (The hostname cannot begin with a hyphen ( - ), but can have a hyphen within the name.)

- **DNS Domain Name:** The DNS Domain enables network resources (such as PCs and printers) to be specified by their friendly names instead of their IP addresses.

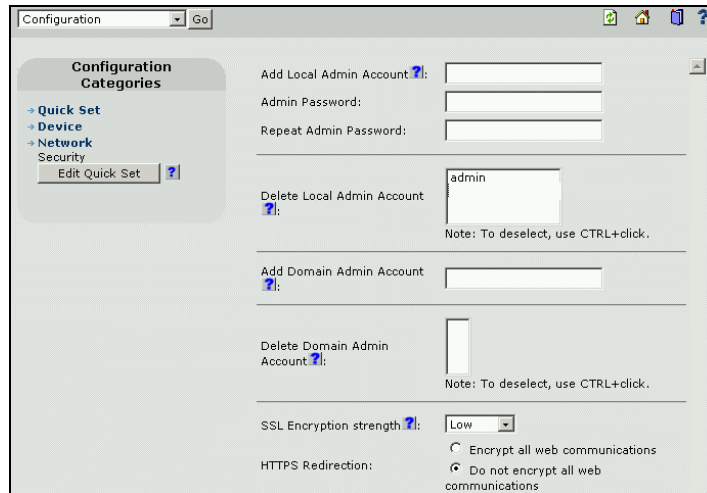
To identify the DNS Domain, type the Domain Name Server address. It must match standard naming conventions: the name must be alphanumeric (for example: mycompany.com) and it may also contain dashes ( - ) (for example: my-company.com). If the network does not have a DNS domain name, "defaultdomain" is the default.

- **DHCP:** This option enables and disables the DHCP configuration feature on the PSA. To manually control the IP address on the PSA, disable the DHCP configuration feature. To have DHCP automatically assign an IP address to the PSA, enable the DHCP configuration feature.
- **IP Address:** Type an IP address without leading zeroes (for example: "10.1.2.3").
- **Subnet Mask:** Type a subnet mask (for example: "255.0.0.0").
- **Gateway:** Type the IP address of the default gateway used to access other networks or subnets. This enables the PSA to communicate with devices (such as printers and PCs) on different subnets. If a gateway is not available, or if the address of the gateway is unknown, type the same IP address used for the PSA, or leave this field blank (or empty).
- **Domain Name Server (DNS) Address:** The DNS enables network resources (such as PCs and printers) to be specified by their friendly names instead of their IP addresses. The secondary DNS address is used as a backup if the primary DNS address cannot be located. In order to use this functionality, specify the primary (and secondary, if applicable) DNS servers by their IP addresses, not friendly names. Use the format: xxx.xxx.xxx.xxx without leading zeroes (for example: "10.1.2.3"). If the network does not have a DNS, leave these fields blank (or empty).
- **WINS Address:** WINS (Windows Internet Name Server) enables network resources (such as PCs and printers) to be specified by their friendly names instead of their IP addresses. The secondary WINS address is used as a backup if the primary WINS address cannot be located. Type the primary (and secondary, if applicable) WINS address in the format: xxx.xxx.xxx.xxx without leading zeroes (for example: "10.1.2.3"). The first number is between 1 and 255 and the other three numbers are between 0 and 255. If the network does not have a WINS server configured, leave these fields blank. Windows 95, 98, and ME clients may be unable to print to a PSA located on a different subnet. (NT domain integration may behave unpredictably if this field is blank.)
- **LPD Printing Options:** Enable or disable LPD printing from all or specified hosts. To configure LPD printing, select the desired option and then click **Apply**. To specify hosts, select this option, type the IP address for each host in **Specified Hosts**, and click **Apply**.

- **Windows NT Domain:** Identify the Windows NT domain or workgroup to which this PSA belongs. The PSA appears under this name in Network Neighborhood.
- **NT Domain Membership Status:** To use NT Domain Authentication on the PSA, create an account on the NT Domain Controller using one of two methods:
  - ❑ Specify a Domain Controller admin name and password (in **NT Domain Administrator Name** and **NT Domain Administrator Password**). This causes the PSA to create the account on the domain controller before attempting to join.
  - ❑ Log on to the PSA's web interface (the PSA is shipped with the default user name of **admin** and the default password of **admin**). Access the **Microsoft Network Settings** page (under **Networking**) and set up the Domain Controller and domain. (For instructions, access the online help for this page.)
- **NT Domain Administrator Name and Password:** Identify the NT Domain administrator to join a specific domain and not for authentication on the PSA.
- **Windows NT Authentication:** Enable or disable Windows NT authentication. If Windows NT authentication is enabled, you can set the PSA to automatically discover Domain Controllers or manually type the Domain Controller names. Select **Enabled** or **Disabled** and click **Apply**.
- **NT Domain Controller Discovery and NT Domain Controller:** An NT domain is a logical grouping of network servers and other computers that share a common security and user account for each user. Users log onto the domain, not onto individual servers in the domain. Microsoft's NT domain security is a feature that allows administrators to easily authorize or restrict print administration and services to specific groups or users by using their existing user name and password of the NT domain.  
  
 Select **Automatically Discover** or **Manually Specify** the NT Domain controllers. (If you are unfamiliar with the operations of domain controllers, it is recommended that you automatically discover them.) To manually specify a list of NT domain controllers, select that option and then specify the NT Domain Controller to add in the **NT Domain Controller** field; click **Add**. Repeat this until all desired NT Domain controllers have been added. Domain Controllers are checked in the same order as they are included in this list, from top to bottom
- **Specified NT Domain Controllers:** Lists all domain controllers.

## Security

In this option, you can add or delete an administrator or domain accounts (Figure 7). Make any necessary changes and then click **Apply**. The following can be changed on this page:



**Figure 7 – Security Settings for the PSA**

- **Add Local Admin Account:** In order to manage, update, or make any changes to a PSA, you must have an administrator account on that specific PSA.. Type the user name of the new administrator account. A user name can be up to 20 characters long and can contain the following: A-Z, a-z, 0-9, special characters ( ~ ' ! @ \$ % ^ ( ) - \_ { } ).
- **Admin Password:** A password can be up to 14 characters long and can contain any character except the following: @ # ;
- **Delete Local Admin Account:** An administrator account might be deleted if you want to restrict access to the PSA. There must always be at least one administrator account on each PSA. If there is only one, you will not be allowed to delete it.
- **Add Domain Admin Account:** See the description for **Add Local Admin Account**.
- **Delete Domain Admin Account:** See the description for **Delete Local Admin Account**.
- **SSL Encryption strength:** Select the level of encryption used on the PSA from the drop-down box (low (DES-56-bit, RC4-40-bit, RC4-128-bit or 3DES-156-bit), medium (RC4-128-bit or 3DES-156-bit), or high (3DES-156-bit)). Stronger encryption means there is less of a likelihood of it being deciphered, but generally takes longer to encrypt and decrypt.
 

**Note:** If you want to change the certificate, use the PSA's web interface; access **SSL** under **Security** on the menu.
- **HTTPS Redirection:** Select **Encrypt all web communications** to redirect all communication through a secure port (HTTPS) or select **Do not encrypt all web communications**.

## Managing and Configuring Multiple PSAs in a Batch Environment

To view or change configuration settings for multiple PSAs, follow these steps:

1. Select **Device List**→**All Devices** and highlight the desired PSAs.
2. From the **Device Tools** drop-down menu at the top of the page, select **Configure** (Figure 8).

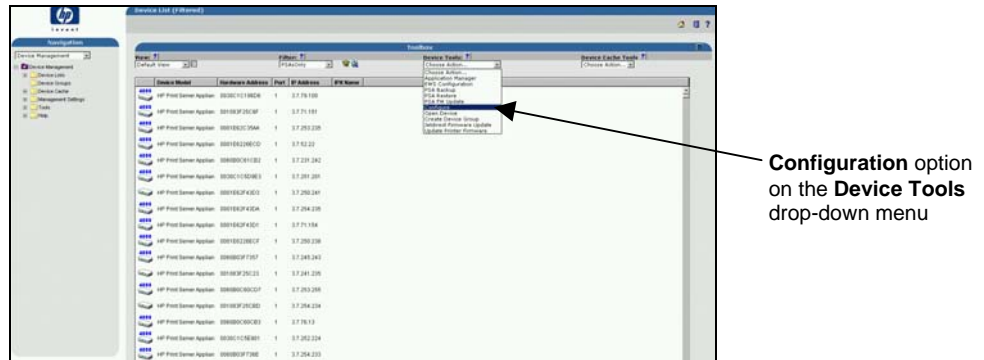


Figure 8– Configure Option in the Device Tools Drop-Down List

3. The **Batch Configuration** page for the selected PSAs is displayed (Figure 9 shows PSAs selected in the top half; Figure 10 shows the fields on the scrollable **Network** page). Change the settings as appropriate and then click **Apply**. (For field descriptions, see the section **Managing and Configuring a Single PSA**.)

**Note:** When configuring the IP address for multiple PSAs, you must enter the first and last IP addresses for the selected PSAs. The IP addresses will be assigned to each PSA in the same order as they are listed.

Device Model	Hardware Address	Port	IP Address	IPX Name
HP Print Server Applian	0001E62C35AA	1	3.7.253.235	
HP Print Server Applian	001083F25C6F	1	3.7.71.151	

Displaying 2 of 2 Possible Devices

Device Model Subset: All Device Models in List

Figure 9 – Configure Option in the Device Tools Drop-Down List

Configure multiple IP addresses by checking this box and then typing the first IP address and then the last IP address

<input type="checkbox"/> Configure Multiple PSA IP Addresses ?:	
First PSA IP Address:	<input type="text"/>
Last PSA IP Address:	<input type="text"/>
Subnet Mask:	<input type="text"/>
Gateway:	<input type="text"/>
<input type="checkbox"/> System Date ?:	Day: <input type="text" value="1"/> Month: <input type="text" value="1"/> Year: <input type="text"/>
System Time (HH:MM:SS):	<input type="text"/> AM <input type="text"/>
<input type="checkbox"/> Time Zone ?:	<input type="text" value="Kwajalein, Eniwetok (GMT-12:00)"/>
<input type="checkbox"/> System Contact ?:	<input type="text"/>
<input type="checkbox"/> Restart/Shutdown ?:	<input checked="" type="radio"/> Restart <input type="radio"/> Shutdown
<input type="checkbox"/> DNS Domain (mydomain.com) ?:	<input type="text"/>
<input type="checkbox"/> DHCP ?:	<input checked="" type="radio"/> Enabled <input type="radio"/> Disabled
<input type="checkbox"/> Primary Domain Name Server (DNS) Address ?:	<input type="text"/>
Secondary Domain Name Server (DNS) Address ?:	<input type="text"/>
<input type="checkbox"/> Primary WINS Address ?:	<input type="text"/>
Secondary WINS Address ?:	<input type="text"/>
<input type="checkbox"/> LPD Printing Options ?:	<input checked="" type="radio"/> Enabled <input type="radio"/> Disabled <input type="radio"/> Enabled Specific
Specified Hosts:	<input type="text"/> <input type="button" value="Add"/> <input type="button" value="Remove"/>
<input type="checkbox"/> Windows NT Domain ?:	<input type="text"/>
<input type="checkbox"/> NT Domain Membership Status:	
NT Domain Administrator Name:	<input type="text"/>
NT Domain Administrator Password:	<input type="text"/>
<input type="checkbox"/> Windows NT Authentication ?:	<input checked="" type="radio"/> Enabled <input type="radio"/> Disabled
NT Domain Controller Discovery ?:	<input checked="" type="radio"/> Automatically discover <input type="radio"/> Manually specify
NT Domain Controller:	<input type="text"/> <input type="button" value="Add"/>
Specified NT Domain Controllers:	<input type="text"/>

Scroll bar to reach additional fields on this page

Up   Down   Remove	
<input type="checkbox"/> Add Local Admin Account ?:	<input type="text"/>
Admin Password:	<input type="text"/>
Repeat Admin Password:	<input type="text"/>
<input type="checkbox"/> Delete Local Admin Account ?:	<input type="text"/>
<input type="checkbox"/> Add Domain Admin Account ?:	<input type="text"/>
<input type="checkbox"/> Delete Domain Admin Account ?:	<input type="text"/>
<input type="checkbox"/> SSL Encryption strength ?:	Low ▾
HTTPS Redirection:	<input checked="" type="radio"/> Encrypt all web communications <input type="radio"/> Do not encrypt all web communications
Return to Device List	
Apply	

**Figure 10 - Batch Configuration for Multiple PSAs**

## Summary

Using the PSA's Management plug-in for Web Jetadmin enables administrators to manage configuration settings for one or multiple PSAs in a batch environment.

## For More Information

<http://www.hp.com/support/printappliance>  
[http://www.hp.com/go/psa\\_whitepapers](http://www.hp.com/go/psa_whitepapers)  
<http://www.hp.com/go/webjetadmin>  
[http://www.hp.com/go/wja\\_whitepapers](http://www.hp.com/go/wja_whitepapers)  
[http://www.hp.com/go/wja\\_components](http://www.hp.com/go/wja_components)